

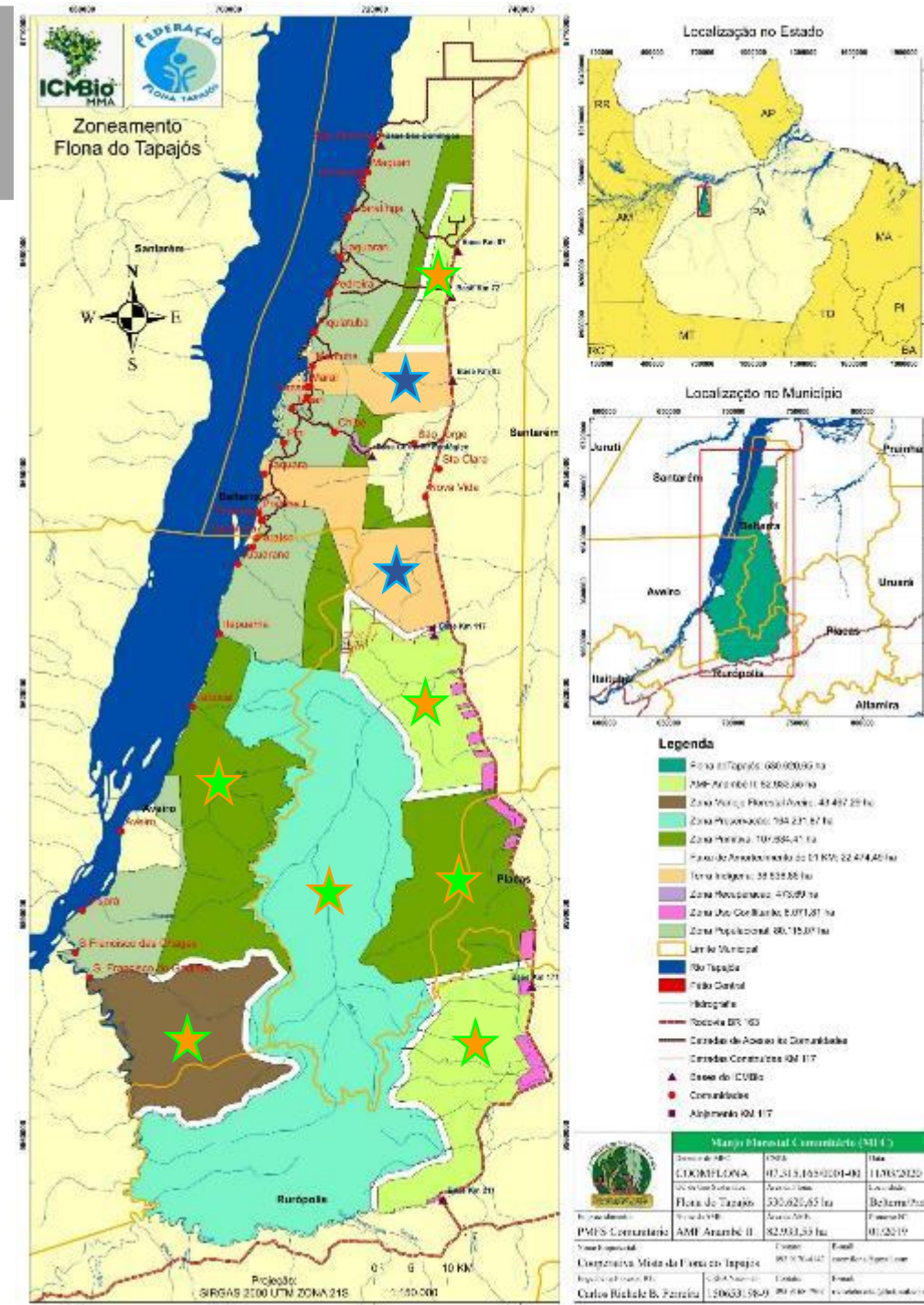
Cooperativa Mista da Flona Tapajós

Mixed Cooperative of the Tapajós National Forest





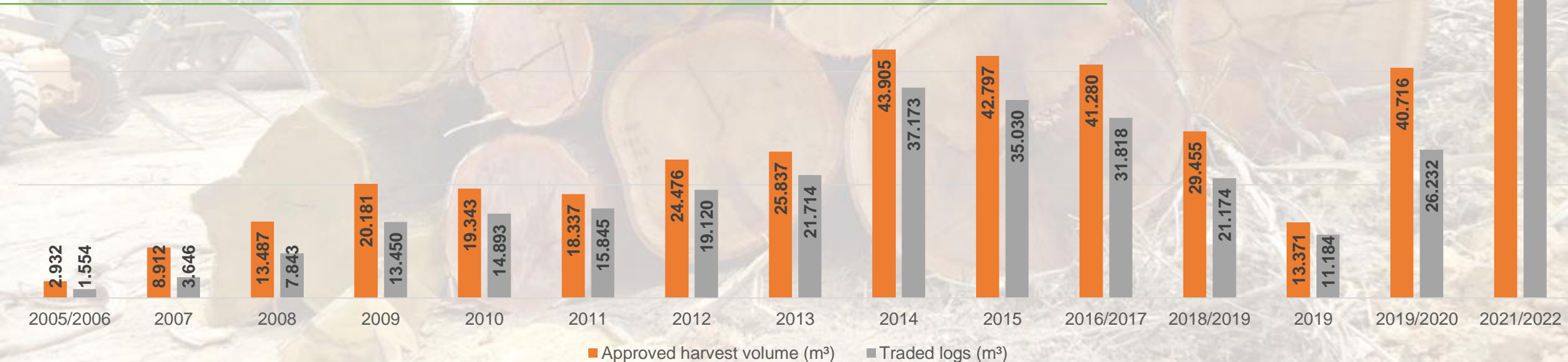
- m^3/ha





Annual production Unit	Harvest year	Annual production area (ha)	Approved harvest volume (m³)	Traded logs (m³)	Value per m³ (€/m³)*
1	2005/2006	100	2,932	1,554	€ 37,62
2	2007	300	8,912	3,646	€ 42,90
3	2008	521	13,487	7,843	€ 28,09
4	2009	700	20,181	13,450	€ 39,40
5	2010	1,000	19,343	14,893	€ 38,00
6	2011	1,000	18,337	15,845	€ 39,60
7	2012	1,000	24,476	19,120	€ 39,60
8	2013	1,000	25,837	21,714	€ 44,00
9	2014	1,559	43,905	37,173	€ 52,00
10	2015	1,551	42,797	35,030	€ 62,20
11	2016/2017	1,589	41,280	31,818	€ 69,00
12	2018/2019	1,473	29,455	21,174	€ 70,10
13	2019	504	13,371	11,184	€ 73,00
New management plan approved	2019/2020	2,218	40,716	26,232	€ 83,00
New management plan approved	2021/2022	2,242	67,166 (log) 43,345 (short logs)	53,733 (forecast) 21,672 (forecast)	€ 94,35

*Values converted from Reais considering the present currency of R\$5/ €





COOPERATIVE STRUCTURE

185 members act in all steps of the management - administrative, technical and operational sectors





BENEFITS

- ~200 direct jobs;
- More than € 600.000,00* shared with members;
- Recognition in the job market;
- Training of community members;
- Support for community organization and management at FLONA Tapajós;
- Improved working conditions and provision of health facilities to workers;
- Monitor forest growth via permanent sample plots;
- Area for the release of wild animals seized from trafficking;
- Prevention of hunting and poaching;
- Trees used as shelter and food provision for fauna are not harvested;
- Gene flow for fauna and flora.



*Values converted from Reais considering the present currency of R\$5/ €



CHALLENGES

- Access to financing;
- Buy harvest machinery (skidders and tractors);
- Sawmill functioning (working capital);
- Development of value chain for non-timber forest products;
- Increase direct jobs generated and expand membership base;
- Training of community members.





LOOKING TO THE FUTURE...

- Contribute to Forest Management throughout the Tapajós Flona and other Conservation Units such as the RESEX Tapajós Arapiuns;
- Diversify production: andiroba and copaiba essential oils, Brazil nuts, fruit pulps, among others;
- Consolidate the furniture factory (uses tree branches as raw material) and the sawmill;
- Consolidate the value chain of wood and NTFP products with added-value.



HOW TO SUPPORT COMMUNITY MANAGEMENT?

- Market access;
- Value chain development;
and
- Funding opportunities.

A high-angle photograph of a group of approximately 30 people, mostly men, standing in a large circle on a dirt field. They are holding hands, suggesting a team-building exercise or a group performance. Many of the individuals are wearing bright orange long-sleeved shirts and green or blue pants. A few people are wearing different clothing, including a blue shirt and a white shirt. In the background, a white pickup truck is parked on the left, and a large, weathered wooden pole or structure is visible in the foreground on the left. The ground is a mix of dirt and gravel. The overall scene appears to be outdoors, possibly at a construction site or a training area.

Thank you!